

BIOLITH

STONE-BORN. BIO-DRIVEN.

Progetto - Project

Opificio Ceramico™ - 2025

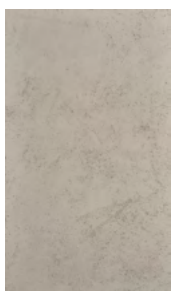
Materiale - Material

Intonaco a base di argilla e sabbie di fiume - Clay-based plaster with river sands

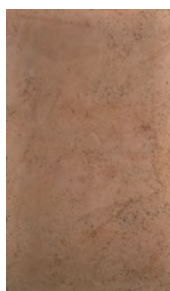
Utilizzo - Use

Rivestimento (interni) - Wall (indoor)

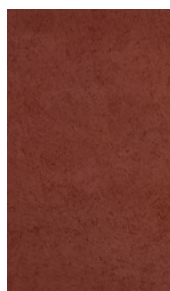
Colori - Colours



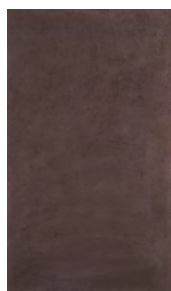
Kos



Cream



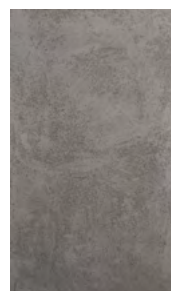
Rust



Ebony



Lava Stone



Sand

Essenze - Scent



Amber



Lavender



Pine Mint



OPIFICIO
CERAMICO

Showroom and Offices
Via San Pietro, 4 41121 Modena Italy T +39 059 4270330
opificioceramico.com